

Missouri NF LOC Doorway Model

Draft for Stakeholder Input—July 2018

Frail Elderly



DEFINITION:

Age 80+

INDICATORS:

- **Activities of Daily Living**—Bathing, Mobility, Transfers, Dressing, Grooming, Toileting, Eating
- **Instrumental Activities of Daily Living**—Meal prep
- **Safety**—Activities of Daily Living impacting health, Fall risk (bathing, transfers)

Physical Limitation



Individual with a physical limitation, medical diagnosis, and/or chronic condition that leads to the need for physical hands-on care

- **Activities of Daily Living**—Toileting, Eating, Transfer, Mobility
- **Clinical**—Wound care, Tube feeding, Ventilator and Tracheotomy

Dementia



Professional Dementia Diagnosis required

- **Activities of Daily Living**—Eating, Mobility, Dressing, Grooming, Bathing, Toileting
- **Instrumental Activities of Daily Living**—Grocery shopping, Laundry, Light housework, Meal preparation, Medication management, Money management, Personal hygiene, Transportation, Using phone to accomplish tasks, Bill paying, Scheduling medical appointments, Other shopping tasks
- **Cognition**—Behavior, Expression, Memory
- **Safety**—Wandering/Exit seeking, ANE (abuse, neglect, exploitation)

Mentally Ill



Professional Mental Health Diagnosis required

- **Instrumental Activities of Daily Living**—Self care
- **Safety**—Wandering/Exit seeking, Behavioral, Fall risk

I/DD (Intellectual or Developmental Disability) or

ABI

(Adult Brain Injury)



Professional Diagnosis of I/DD, Acquired Brain Injury or Traumatic Brain Injury as defined in RSMO-192.735

- **Instrumental Activities of Daily Living**—Self care
- **Safety**—Wandering/Exit seeking, Behavioral, Fall risk

LIST OF POSSIBLE INDICATORS

Activities of Daily Living	Instrumental Activities of Daily Living	Medical Indicators	Clinical Indicators	Safety Indicators	Cognition Indicators
<ul style="list-style-type: none"> • Transfers • Locomotion • Bed mobility • Upper dressing • Lower dressing • Eating • Toileting • Personal care • Bathing 	<ul style="list-style-type: none"> • Grocery shopping • Laundry • Light housework • Meal preparation • Medication management • Money management • Personal hygiene • Transportation • Using phone to accomplish tasks • Bill paying • Scheduling medical appointments • Other shopping tasks 	<ul style="list-style-type: none"> • Medical history • Mental health history • Vital signs • Medications • Medical conditions • Diagnoses • Special treatments or die 	<ul style="list-style-type: none"> • Assistive devices • Treatments and procedures • Rehabilitative services • Tube feeding • Wound care • Occupational therapy • Ventilator care 	<ul style="list-style-type: none"> • Environmental factors/problems • Living conditions • Risk evidence 	<ul style="list-style-type: none"> • Memory • Behavior • Communication • Sensory orientation • Assessment of social situation • Expression

Frail Elderly



DEFINITION:

Age 80+

INDICATORS:

Activities of Daily Living

- Bathing
- Mobility
- Transfers
- Dressing
- Grooming
- Toileting, Eating

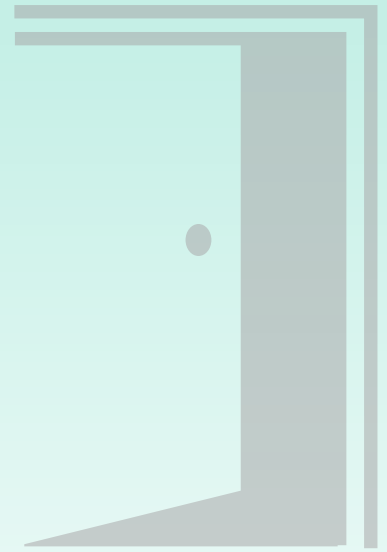
Instrumental Activities of Daily Living

- Meal prep

Safety

- Activities of Daily Living impacting health
- Fall risk (bathing, transfers)

Physical Limitation



DEFINITION:

Individual with a physical limitation, medical diagnosis, and/or chronic condition that leads to the need for physical hands-on care

INDICATORS:

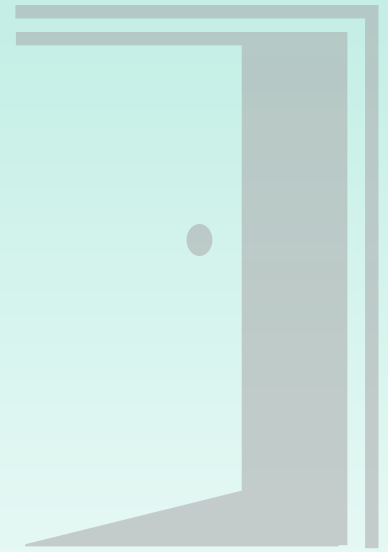
Activities of Daily Living

- Toileting
- Eating
- Transfer
- Mobility

Clinical

- Wound care
- Tube feeding
- Ventilator and Tracheotomy

Dementia



DEFINITION:

Professional Dementia Diagnosis required

INDICATORS:

Activities of Daily Living

- Eating
- Mobility
- Dressing
- Grooming
- Bathing
- Toileting

Instrumental Activities of Daily Living

- Grocery shopping, Laundry
- Light housework
- Meal preparation
- Medication management
- Money management
- Personal hygiene

- Transportation
- Using phone to accomplish tasks
- Bill paying
- Scheduling medical appointments
- Other shopping tasks

Cognition

- Behavior
- Expression
- Memory

Safety

- Wandering/Exit seeking
- Abuse
- Neglect
- Exploitation

Mentally Ill



DEFINITION:

Professional Mental Health Diagnosis required

INDICATORS:

Instrumental Activities of Daily Living

- Self care

Safety

- Wandering/Exit seeking
- Behavioral
- Fall risk

I/DD or ABI

I/DD (Intellectual or Developmental Disability) or
ABI (Adult Brain Injury)

DEFINITION:

Professional Diagnosis of I/DD, Acquired Brain Injury or Traumatic Brain Injury as defined in RSMO-192.735

INDICATORS:

Instrumental Activities of Daily Living

- Self care

Safety

- Wandering/Exit seeking
- Behavioral
- Fall risk